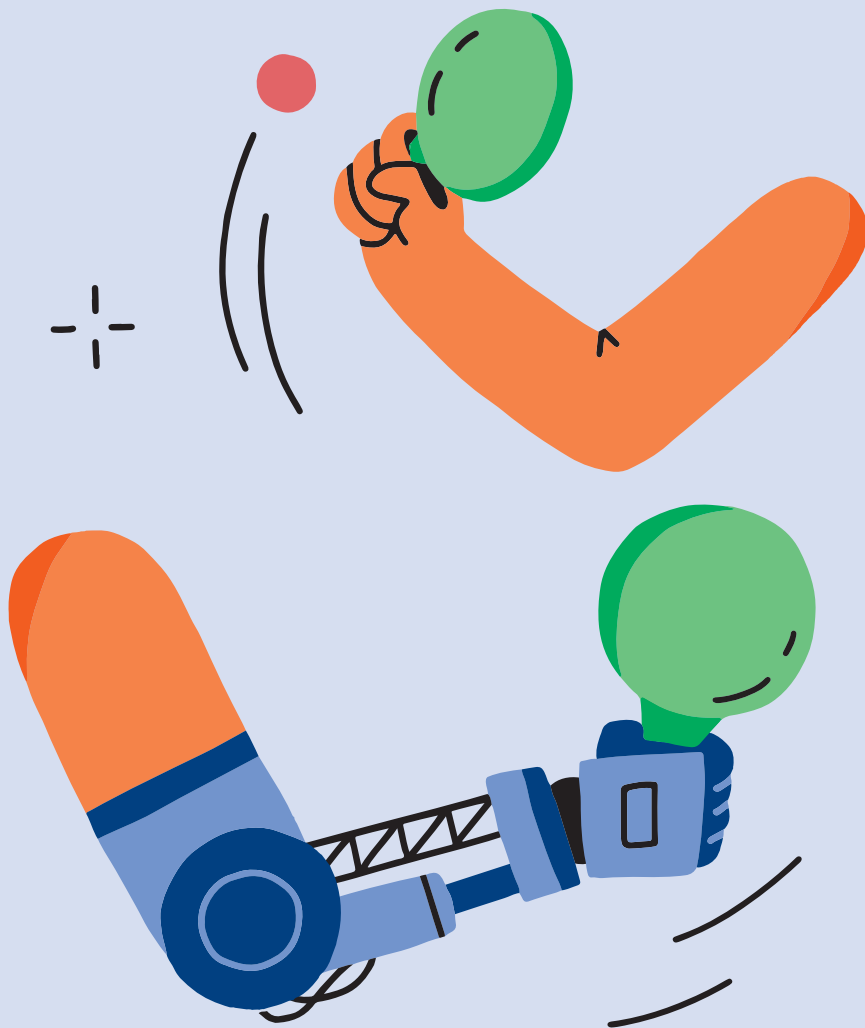


Instructor's Notes

Ethics and Community



1. LESSON

Total Duration: 90 Minuten

Duraton	Type	Activity	Material
5 min.	2 Person Teams	Challenge #1 Try to write your name with a pen in your mouth. Can you read it?	Pen and Paper for each participant
5 min.		Watch the film on the following link: Link: https://youtu.be/dtq76mnGKMO	
10 min.	Individual Work	1. On Your Way to School... Take a piece of paper and a pencil and draw a map of your way to school. Pay attention to as many details as possible and write or draw them down. Note the natural features of the environment as well as the structural features, such as the number of steps, accessibility to buildings and the layout inside. Document all means of transportation you use on your way e.g., bicycle, car, bus and train.	Pen and Paper for each participant
5 min.	2 Person Teams	2. Imagine you're in a wheelchair... Can you manage your way the school by yourself? What are the biggest challenges? Individual work: Using a different colored pen, mark the areas on your map that you think are difficult for wheelchair users to navigate. 2 person teams: Discuss your findings with your partner. Did you encounter similar problems?	2 Pens
5 min.	2 Person Teams	3. Think about possible solutions to remove barriers and obstacles you have identified on your routes to school. For example, could a ramp be helpful? In what ways would your suggestions impact people who are using a wheelchair? Document your ideas on your maps using an additional color.	

10 min.	All Participants	<p>Together with the students collect the ideas and discuss solutions.</p> <p>a. Would a ramp on your way to school help you overcome an obstacle?</p> <p>b. Could a high-tech assistance system help you on your way to school?</p> <p>c. Could or would you need to modify your route to school?</p> <p>d. Are there other ways to overcome barriers on your way to school?</p>	
5 min.	Individual Work	<p>Challenge #2</p> <p>Tie your shoes using one hand.</p> <p>How long did it take?</p>	
5 min.	Break		
5 min.	2 Person Teams	<p>Challenge #3</p> <p>Take turns asking and answering the following questions to your counterpart without words or writing:</p> <ul style="list-style-type: none"> • - What time is it? • - What will the weather be like tomorrow? • - What is your favorite animal? • - How are you? 	
25 min.	All Participants	<p>Roleplay</p> <p>1. (5 min.) Groups of 5-7 students are formed and sit in a circle.</p> <p>Each person draws a card and is assigned a role. To help students assume their assigned role, the cards contain thoughts to consider about their character. The person with the „facilitator card“ begins the discussion by reading the scenario aloud.</p> <p>2. Students will be asked to begin the discussion with the four guiding questions below. A timer can be used to ensure that all four questions are addressed (5 minutes per question):</p> <ul style="list-style-type: none"> - What can each of you do to make Thomas/Sarah feel more included at school? - What can you do to help Thomas/Sarah in his/her daily life? 	<p>Roleplay cards</p> <p>Timmer (Optional)</p>

		<ul style="list-style-type: none">- What are the challenges you face in your role?- How can technological assistance systems support Thomas/Sarah?- When will he/she still have to rely on the help of his or her classmates?	
5 min.		Discussion and conclusion: Conclusions from the group discussions.	

